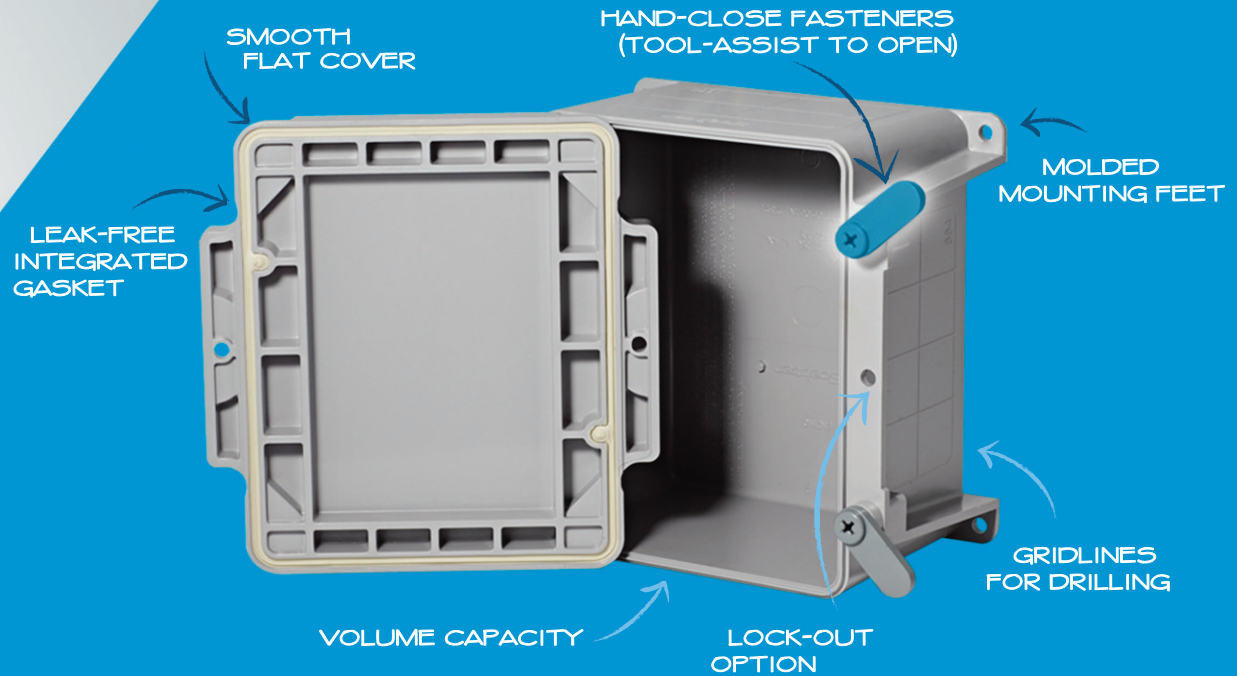


NEW

KRALOY® JBox™

The Next Generation Junction Box



AVAILABLE IN SIZES 4" TO 12"

Fasteners

- Close by hand – tool assist to open
- 100% non-metallic – corrosion resistant material
- No loose hardware saves you time

Lock-out Option

- Available on sizes 6" to 12"
- Use a tie-wrap, bolt or padlock for added security

Integrated Gasket

- Injection molded gasket permanently fixed to the cover – no installation required
- Proprietary gasket material creates a 6P rated enclosure

Cover

- No ribs – offers a flat, smooth surface for mounting of devices or labels

Gridlines

- Easy reference for drilling knockouts
- Makes conduit alignment a snap

Mounting Feet

- Molded – no loose parts to assemble
- Located on corners out of the way of conduit connections
- Flush with the back of the box for close surface mounting
- Integrated design of mounting feet offers improved strength

Volume Capacity

- Increased volume capacity – largest in industry
- Full use of interior space

NEMA Rated

1, 2, 3R, 4, 4X, 6, 6P, 12, 13

Fully Certified

CSA C22.2 No. 40

CSA C22.2 No. 85

UL 50 / CSA C22.2 No. 94.1

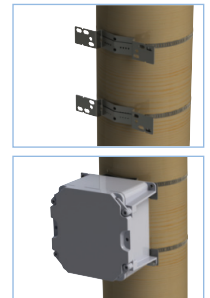
UL 50E / CSA C22.2 No. 94.2



Pole Mounting Kit

The one-of-a-kind pole mount kit will save contractor's time and money when mounting to a utility pole.

- One kit fits all sizes 4" to 12" Kraloy JBox
- Works with wood, concrete, steel and composite poles
- Installs on round, square & octagonal poles up to 15" diameter



Back Panel

- Designed to fit 8" & 12" Kraloy JBox
- Made of 14 gauge carbon steel
- White epoxy powder-coated finish
- Easy to cut and drill to mount devices



KRALOY®

www.kraloyinnovation.com



The Next Generation Junction Box

Kraloy JBox

Size (inches)	Part Number	Product Code
4 x 4 x 2	JBX442	277000
4 x 4 x 4	JBX444	277001
5 x 5 x 2	JBX552	277002
6 x 3 x 4	JBX634	277003
6 x 6 x 4	JBX664	277004
6 x 6 x 6	JBX666	277005
8 x 8 x 4	JBX884	277006
8 x 8 x 7	JBX887	277007
12 x 12 x 4	JBX12124	277008
12 x 12 x 6	JBX12126	277009
12 x 12 x 8	JBX12128	277010

Accessories

Description	Part Number	Product Code
Pole Mount Kit	PMK4-12	077940
Back Panel for 8" x 8"	BP88CSW	077861
Back Panel for 12" x 12"	BP1212CSW	077865

The Easiest Box to Install

Designed to perform in the most demanding environments, the NEW Kraloy® JBox™ has added features to make this the easiest box to use – no matter the situation.

Advantages

Zero Footprint

Complete and easy access to all mounting feet and fasteners.

Install Devices

Mount back panels and DIN rails easily with the molded standoff in the base of the box.

Mounting in a Cover

Covers are free and clear of obstructions for mounting devices.

Added Security

Use a tie-wrap, bolt or padlock to restrict access with the lock-out feature.

Performance Ratings

Maximum Temperature Range

Maximum ambient temperatures to 122°F (50°C) as per the GEC

Recommended Operating Temperature

-40°F to 122°F (-40°C to 50°C)

UV and Water Exposure Rating

UL 746C approved for exposure to UV & water

Flame & Smoke Rating

UL 94V-0 (UL94 Vertical Flame Test)



LOCK-OUT
Option



NEW
JBX 634